



Client

Date

Qty

Project

Type

PO#

LS-PSU-24V-96W-5IN1



Features:

- Output constant voltage, 24VDC 96W 4A
- UL cUL listed, Class 2, Class P, Type HL, FCC, NEMA 4X, T24
- Universal input, 110-277Vac
- Build in active PFC, typical power factor>0.95, THD<10%@120V Max. load
- High efficiency : up to 91%
- Load: 0.01-100%
- Short-circuit, over-temperature, over-load protection
- Full protection metal case, for dry, damp, wet location
- Flicker-free•Suitable for LED lighting and moving sign applications

Product advantage:

- Dim-all: Triac/0-10V/1-10V/10V PWM/Potentiometer
- Switch to PWM or Voltage regulation output (American Invention Patent)
- Dimming effect:
Voltage Reduce mode: 100%-0.01% dim, stepless dimming, flicker-free,
PWM dim mode:100-0.1% dim, flicker-free
- Triac dim mode: Forward phase & reverse phase, MLV, ELV dim
- Exclusive patent design of "Clamshell" junction box, low-profile logo
- Flexible wiring compartment to adjust the AC and DC wiring space
- Metal shell NEMA 4X for indoor and outdoor use; Wet, damp, and dry location
- Title 24 JA8 compliant
- Constant voltage type, fine tune of output voltage
- Super low loading request, works perfect at 0.01-100% load.

Dimming range: 100%-0.01% Ultra Deep Amplitude

No Vpeak-peak during driver on/off and dimming, no harm to the LED for long-term using, and slow down the speed of lumen depreciation.

Works with single channel CCT warm-dim LED strip/tape (2 wires).

Switching different output mode, can be compatible with more different types of LED lamps

compatible with DC-DC design LED fixture, such as MR16, PAR, wall washer, linear lighting, LED strip/type



Client

Date

Qty

Project

Type

PO#

LS-PSU-24V-96W-5IN1

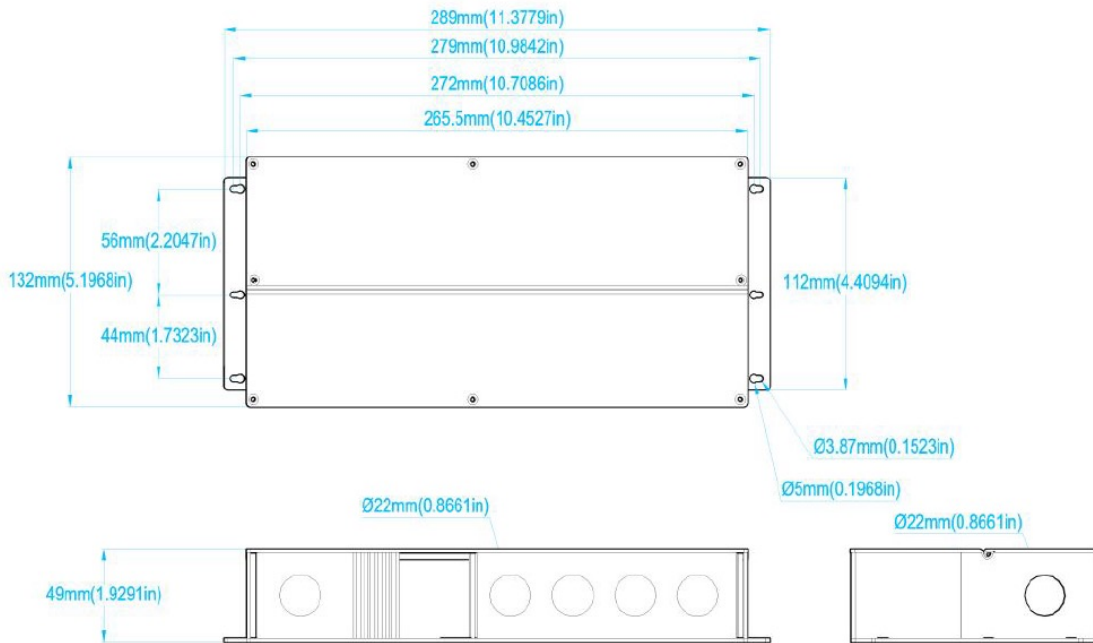
Model		LS-PSU-24V-96W-5IN1	
Certificates		UL, cUL listed, Class 2 unit, Type HL rated, FCC NEMA 4X	
Output	DC Voltage	24V	
	Rated Current	4A	
	Rated Power	96W	
	Voltage Tolerance	±0.5V	
	Voltage Regulation	±0.5%	
	Load Regulation	±1%	
Input	Voltage Range	110-277VAC	
	Frequency Range	47-63Hz	
	Power Factor (Typ.) @ full load	0.98@120VAC 0.97@277VAC	
	THD (Typ.) @ full load	<20% @120VAC &277VAC	
	Efficiency (Typ.) @ full load	87% @120Vac 90%@277Vac	
	AC Current (Max.)	1.3A@110Vac	
	Inrush Current (Typ.)	20A, 50%, 1.6ms @120VAC; 25A, 50% 1.2ms @277VAC	
	Leakage current	<0.50mA	
Protection	Short Circuit	shut down o/p voltage, re-power on to recover after fault condition is removed	
	Over Loading	≤120% Hiccup mode,recovers automatically after fault condition is removed	
	Over temperature	100℃±10℃ shut down o/p voltage, automatically recover after cooling.	
Environment	Working TEMP.	-40~+60℃ (see below derating curve)	
	Working Humidity	20~90%RH, non-condensing	
	Storage TEMP. Humidity	-40~+80℃, 10~95%RH	
	TEMP .coefficient	±0.03%/℃ (0~50℃)	
	Vibration	10~500Hz, 5G 10min./1 cycle,period for 60min. each along X,Y,Z axes	
Safety& EMC	Safety standards	UL8750+UL1310	
	Withstand voltage	I/P-O/P:1.88KVAC	
	Isolation resistance	I/P-O/P:100MΩ/500VDC/25℃/70%RH	
	EMC EMISSION	FCC Part 15 B	
others	Net. Weight	1.0Kg	
	Size	226.5*117.5*42.5mm (L*W*H)	
	packing	10PCS/CTN,Packing size:275*255*250mm	
Notes	<p>1. All parameters if NOT specially mentioned are measured at 120VAC input , rated load and 25℃of ambient temperature.</p> <p>2. To extend the driver's using life ,please reduce the loading at lower input voltage.</p>		



Client Date Qty
Project Type PO#

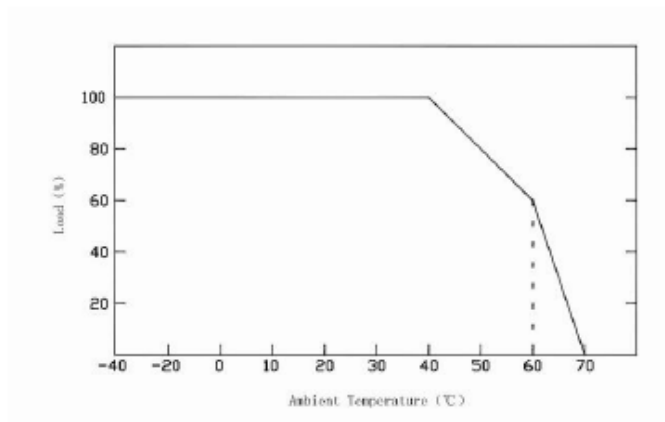
LS-PSU-24V-96W-5IN1

Dimensions:



Derating Curve:

To extend their life, please refer to the Derating Curve and derate according to the temperature.

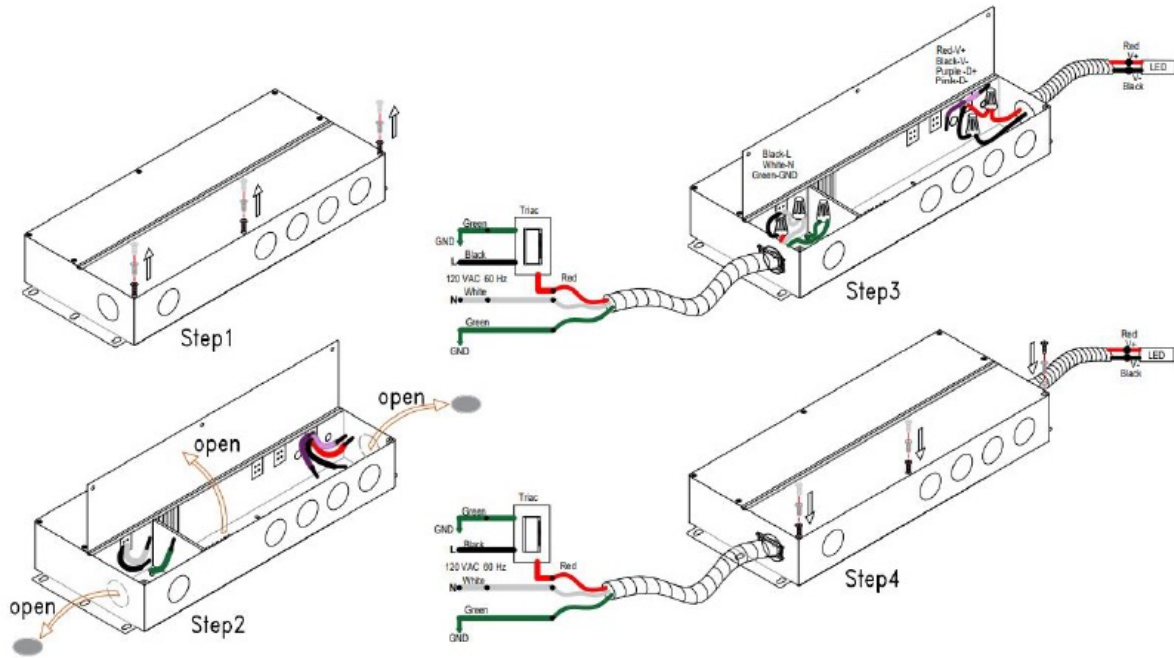




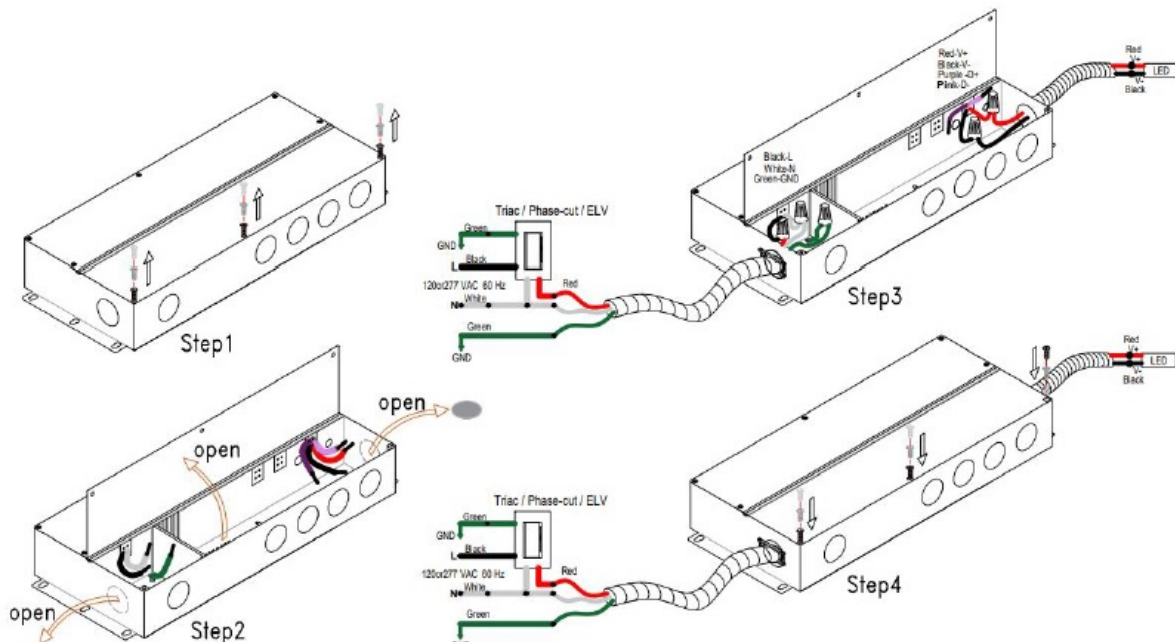
Client Date Qty
Project Type PO#

LS-PSU-24V-96W-5IN1

Using Triac MLV wiring diagram:



Using Triac ELV wiring diagram:

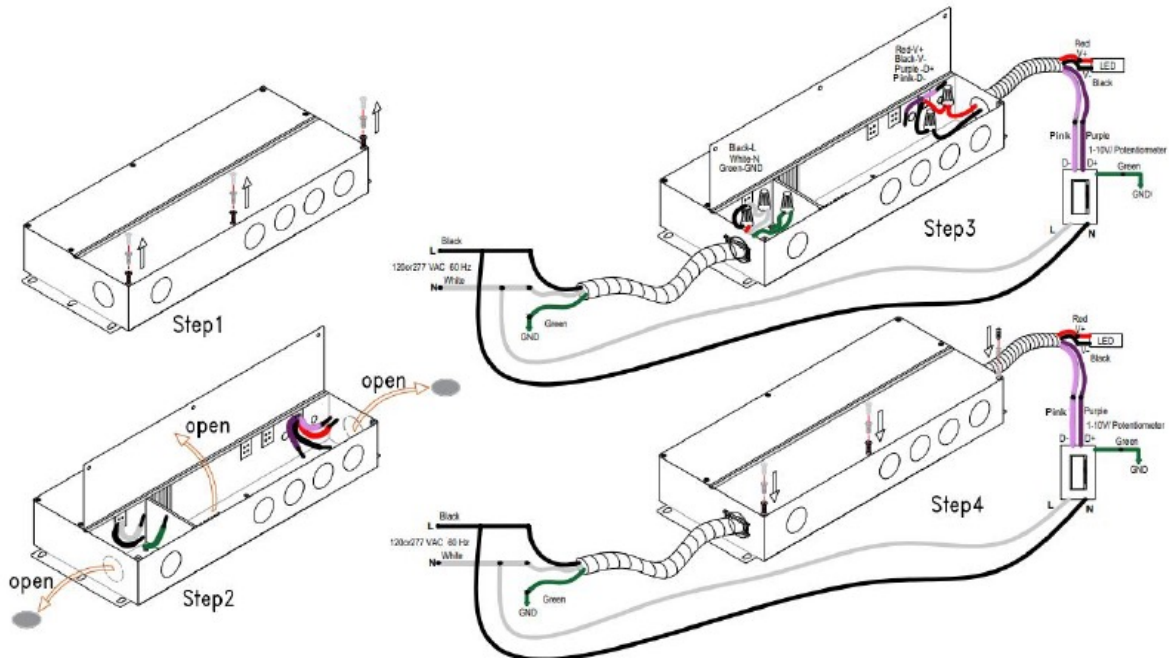




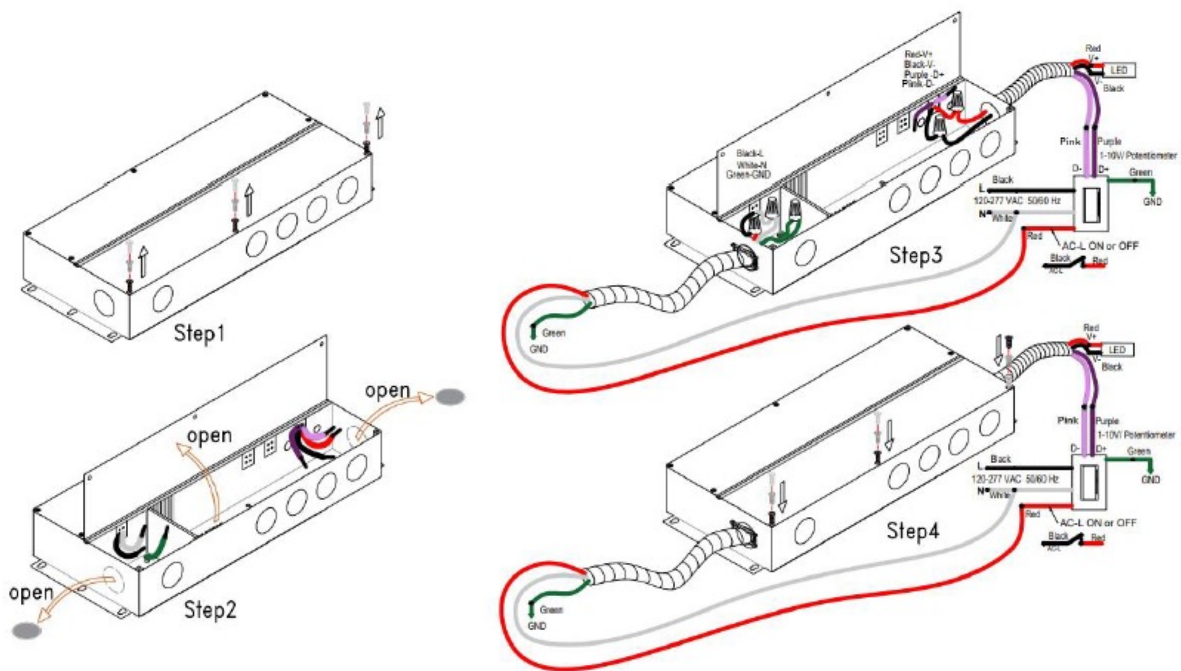
Client Date Qty
Project Type PO#

LS-PSU-24V-96W-5IN1

Using 0-10V/1-10V dimming (Power supply trough dimmer switch):



Using 0-10V/1-10V dimming (Power supply trough dimmer switch):

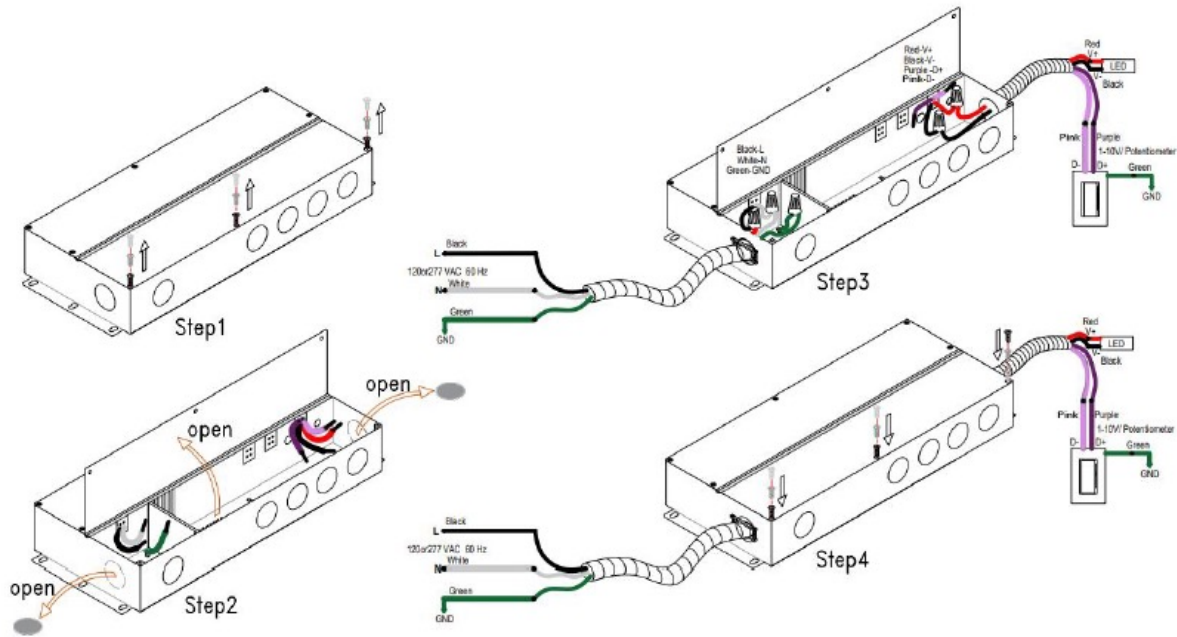




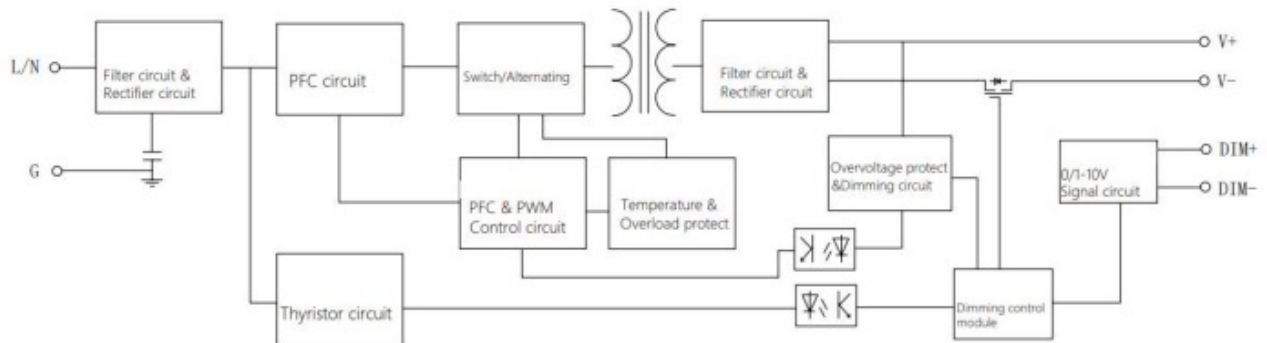
Client Date Qty
Project Type PO#

LS-PSU-24V-96W-5IN1

Using 0-10V/1-10V dimming (The dimmer is not connected to high voltage):



The topology





Client

Date

Qty

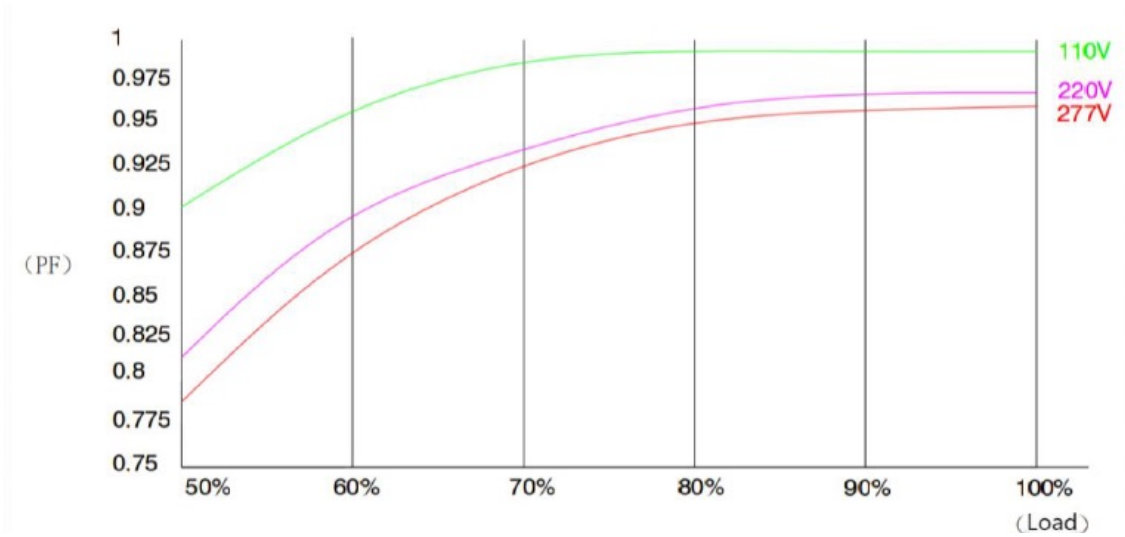
Project

Type

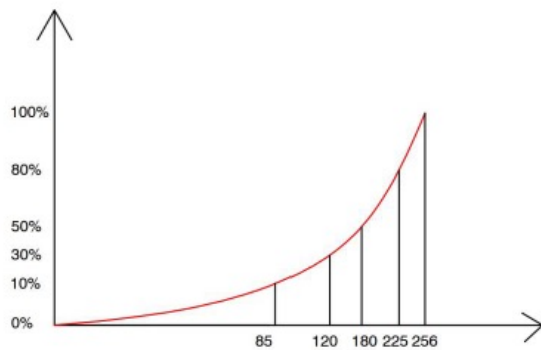
PO#

LS-PSU-24V-96W-5IN1

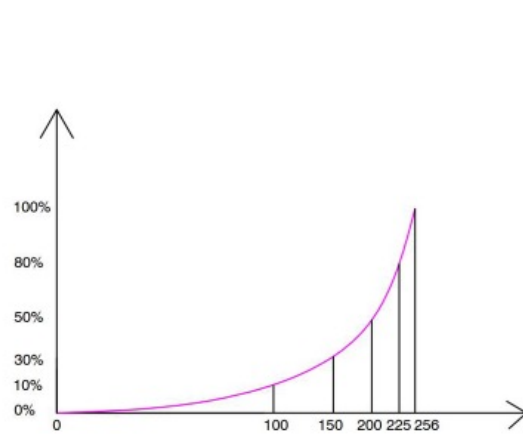
PFC load graph



PWM dimming curve



VR dimming curve





Client

Date

Qty

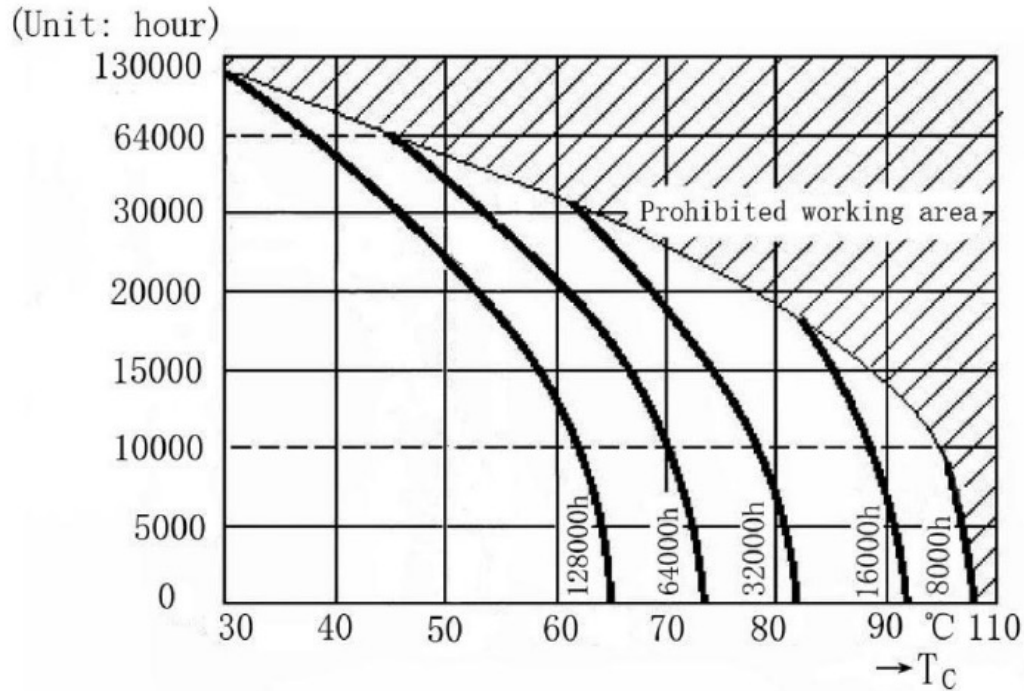
Project

Type

PO#

LS-PSU-24V-96W-5IN1

Power supply operating temperature and life curve



Instruction:

- 1) This driver should be installed by qualified and professional person.
- 2) Please make sure the driver is installed with adequate ventilation around it to allow for heat dissipation.
- 3) Ensure that wiring is correct before test in order to avoid light and power supply damage.