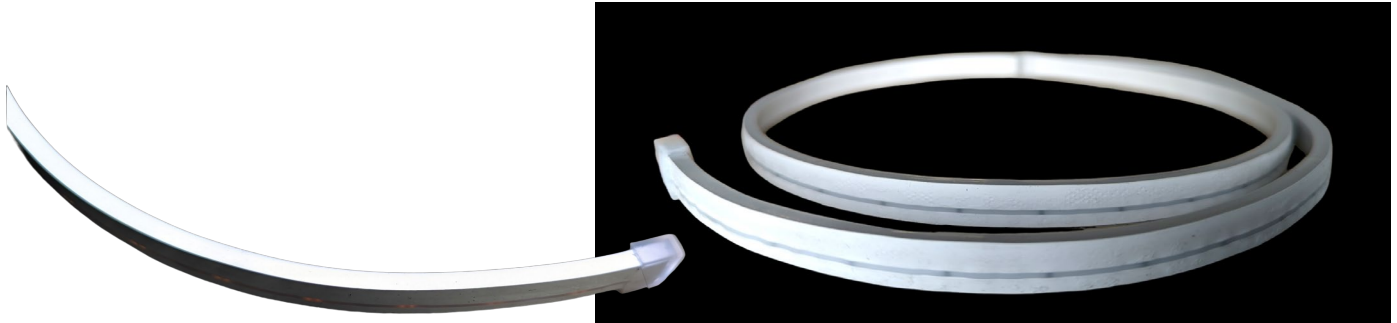




Client Date Qty
 Project Type PO#

LS-STRIP-NEON-TOP-12V-4*10-CCT.VAR



CCT



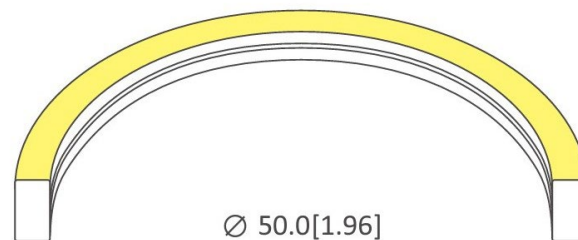
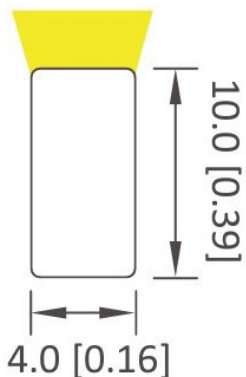
Description

- CRI 90+
- DEL SMD
- 50 000hrs lifetime
- 5 years warranty
- 3-Step MacAdam's ellipse, single binning
- CCT 2700K,4000K,6000K
- IP67 Protection

Spécifications

Model	Protection	Power consumption	CCT	Lumens	LED/ft	Input voltage	Beam angle	Max.Length	Dimensions
LS-STRIP-NEON-TOP-12V-4*10-CCT.VAR	IP65	7,2W/m	2700K/4000K/6000K	267lm/m	336pcs/m	12V	120°	5 m	4mmx10mm

Dimensions

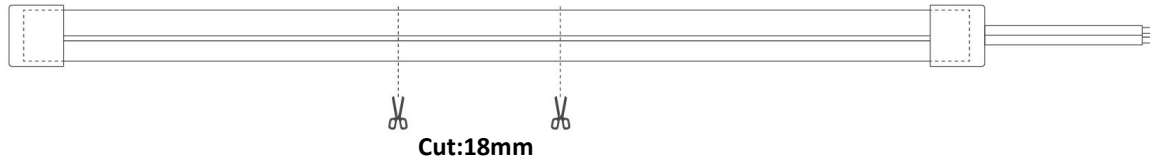




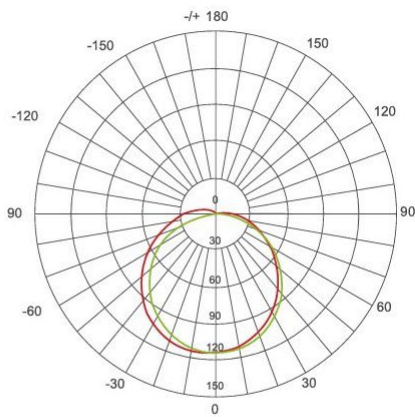
Client Date Qty
 Project Type PO#

LS-STRIP-NEON-TOP-12V-4*10-CCT.VAR

Cut



Photometric test



Unit: cd

- C 0 /180,120.2°

- C 90/270,114.2°

AVERAGE BEAM ANGLE (50%): 117.2°

Flux Out: 267.0lm

0.02m	96656,325988lx	5.83cm
0.04m	24164,81497lx	11.67cm
0.06m	10740,36221lx	17.50cm
0.08m	6041,20374lx	23.34cm
0.10m	3866,13040lx	29.17cm
0.12m	2685,9055lx	35.01cm
0.14m	1973,6653lx	40.84cm
0.16m	1510,5094lx	46.67cm
0.18m	1193,4025lx	52.51cm
0.20m	966,6,3520lx	58.34cm

Height Eavg, Emax

Beam Angle: 111.13°

Diameter

Accessorie



END CAP