



Client  Date  Qty   
Project  Type  PO#

## LS-PSU-24V-200W-5IN1



### Features:

- Output constant voltage, 24VDC 200W 8,33A
- UL cUL listed, Class P, Type HL, FCC, NEMA 4X, T24
- Universal input, 110-277Vac
- Build in active PFC, typical power factor >0.95, THD <10% @ 120V Max. load
- High efficiency : up to 91%
- Load: 0.01-100%
- Short-circuit, over-temperature, over-load protection
- Full protection metal case, for dry, damp, wet location
- Flicker-free-Suitable for LED lighting and moving sign applications

### Product advantage:

- Dim-all: Triac/0-10V/1-10V/10V PWM/Potentiometer
- Switch to PWM or Voltage regulation output (American Invention Patent)
- Dimming effect:  
Voltage Reduce mode: 100%-0.01% dim, stepless dimming, flicker-free,  
PWM dim mode: 100-0.1% dim, flicker-free
- Triac dim mode: Forward phase & reverse phase, MLV, ELV dim
- Exclusive patent design of "Clamshell" junction box, low-profile logo
- Flexible wiring compartment to adjust the AC and DC wiring space
- Metal shell NEMA 4X for indoor and outdoor use; Wet, damp, and dry location
- Title 24 JA8 compliant
- Constant voltage type, fine tune of output voltage
- Super low loading request, works perfect at 0.01-100% load.

Dimming range: 100%-0.01% Ultra Deep Amplitude

No Vpeak-peak during driver on/off and dimming, no harm to the LED for long-term using, and slow down the speed of lumen depreciation.

Works with single channel CCT warm-dim LED strip/tape (2 wires).

Switching different output mode, can be compatible with more different types of LED lamps

compatible with DC-DC design LED fixture, such as MR16, PAR, wall washer, linear lighting, LED strip/type



Client  Date  Qty   
 Project  Type  PO#

## LS-PSU-24V-200W-5IN1

### ■ Specification

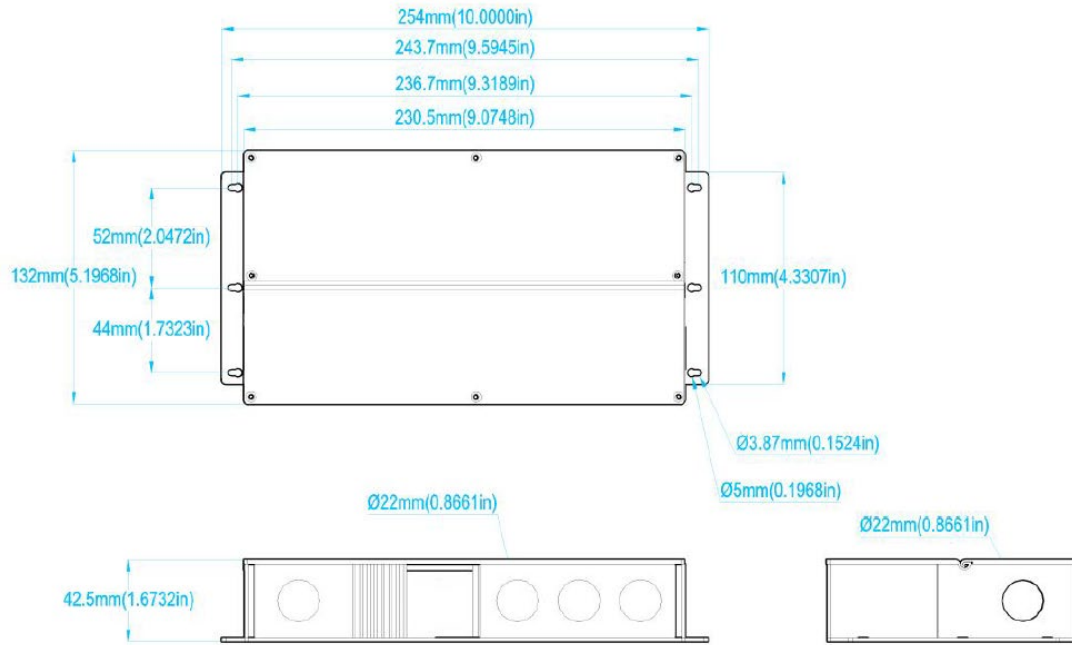
<b>Certificates</b>		UL, cUL listed, Type HL rated, FCC NEMA 4X			
<b>Output</b>	DC Voltage	24V			
	Rated Current	8.33A			
	Rated Power	200W			
	Voltage Tolerance	±0.5V			
	Voltage Regulation	±0.5%			
	Load Regulation	±1%			
<b>Input</b>	Voltage Range	110-277VAC			
	Frequency Range	47-63Hz			
	Power Factor (Typ.)	@ full load 0.99@120VAC 0.98@277VAC			
	THD (Typ.) @ full load	<20% 120VAC & 277VAC			
	Efficiency (Typ.) @ full load	90% @120Vac 92%@277Vac			
	AC Current (Max.)	3.3A@110Vac			
	Inrush Current (Typ.)	20A, 50%, 1.9ms @120VAC; 35A, 50% 1.9ms @277VAC			
	Leakage current	<0.50mA			
<b>Protection</b>	Short Circuit	Hiccup mode, recovers automatically after fault condition is removed.			
	Over Loading	≤120% Hiccup mode, recovers automatically after fault condition is removed			
	Over temperature	100°C±10°C shut down o/p voltage, automatically recover after cooling.			
<b>Environment</b>	Working TEMP.	-40~+60°C (see below derating curve)			
	Working Humidity	20~90%RH, non-condensing			
	Storage TEMP. Humidity	-40~+80°C, 10~95%RH			
	TEMP. coefficient	±0.03%/°C (0~50°C)			
	Vibration	10~500Hz, 5G 10min./1 cycle, period for 60min. each along X,Y,Z axes			
<b>Safety &amp; EMC</b>	Safety standards	UL8750+UL1310			
	Withstand voltage	I/P-O/P: 1.88KVAC			
	Isolation resistance	I/P-O/P: 100MΩ/500VDC/25°C/70%RH			
	EMC EMISSION	FCC Part 15 B			
<b>others</b>	Net. Weight	2.1Kg			
	Size	254*132*42.5mm (L*W*H)			
	packing	10PCS/CTN, Packing size: 340*295*295mm			
<b>Notes</b>	1. All parameters if NOT specially mentioned are measured at 120VAC input, rated load and 25°C of ambient temperature. 2. To extend the driver's using life, please reduce the loading at lower input voltage.				



Client  Date  Qty   
Project  Type  PO#

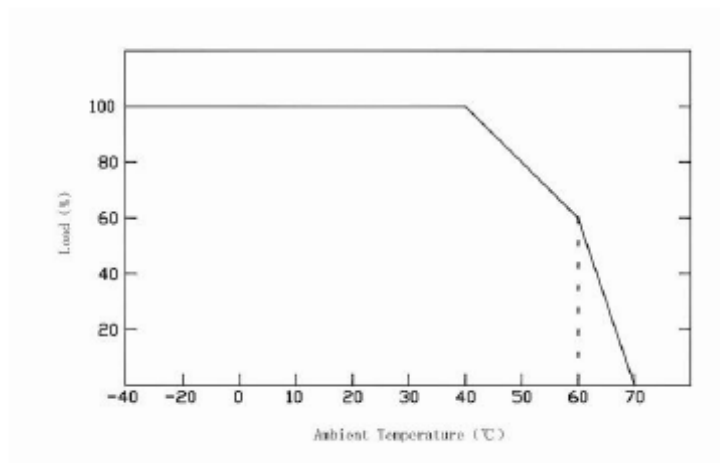
# LS-PSU-24V-200W-5IN1

## Dimensions:



## Derating Curve:

To extend their life, please refer to the Derating Curve and derate according to the temperature.

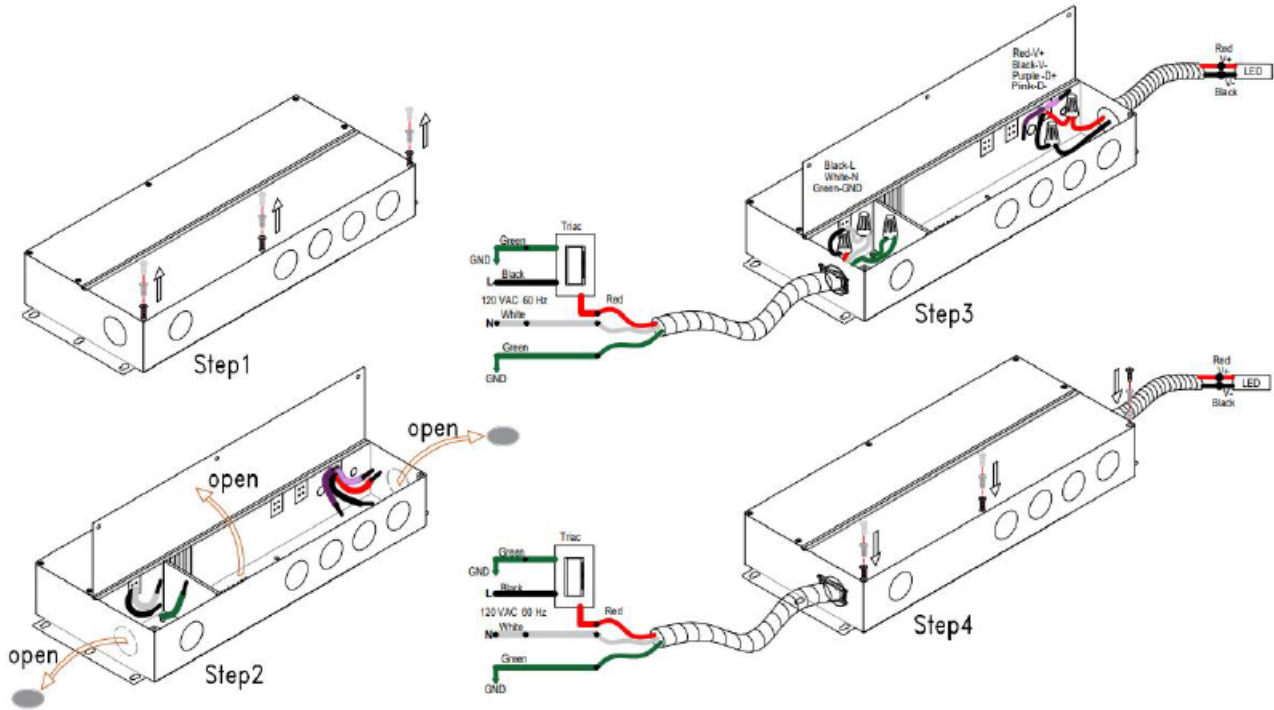




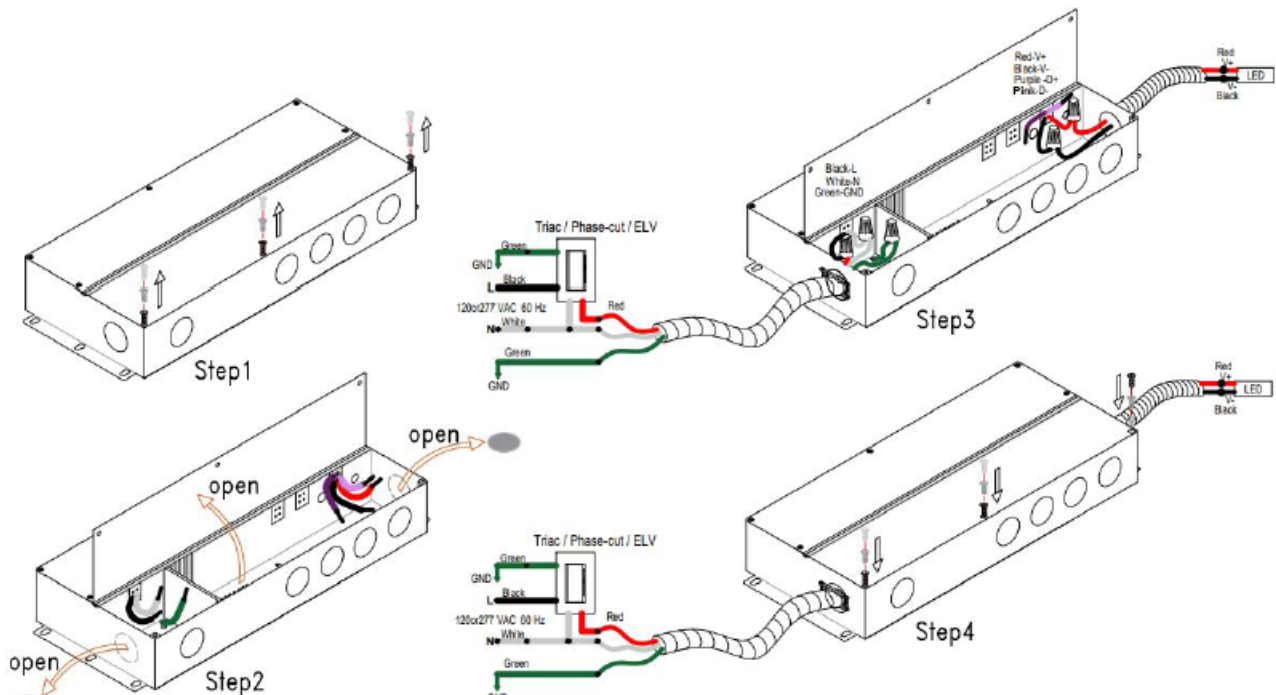
Client  Date  Qty   
Project  Type  PO#

# LS-PSU-24V-200W-5IN1

Using Triac MLV wiring diagram:



Using Triac ELV wiring diagram:

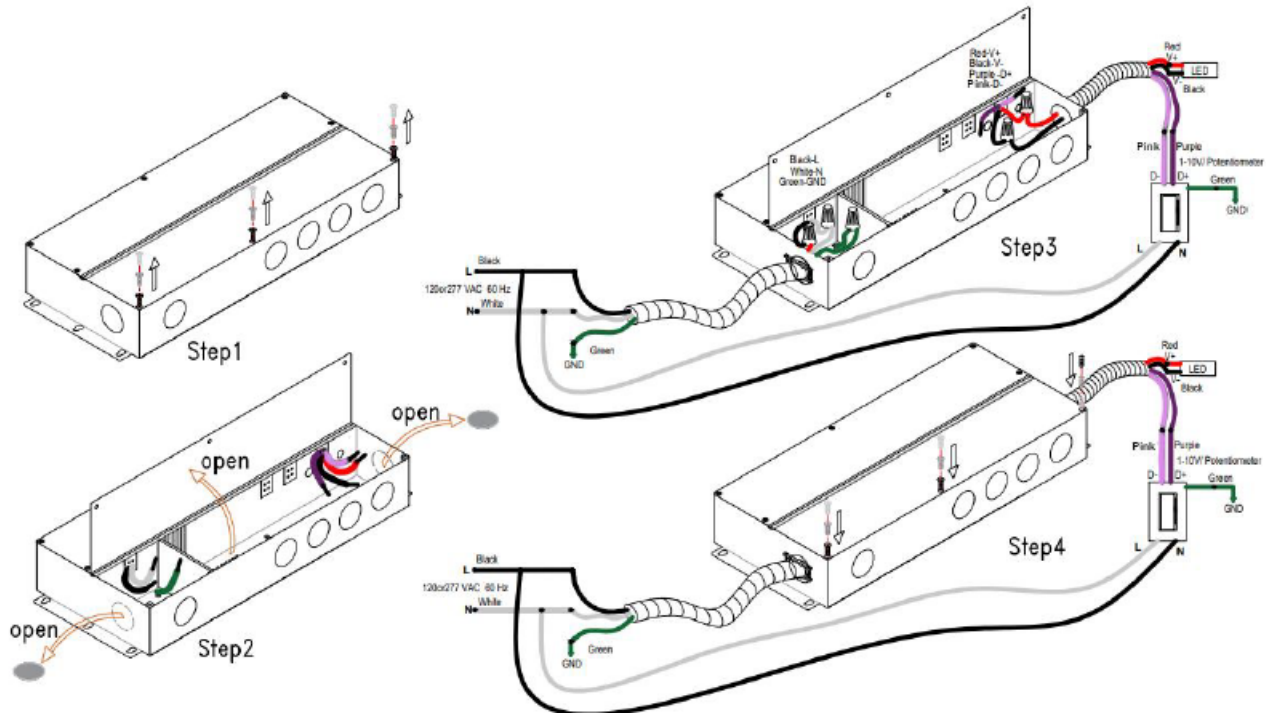




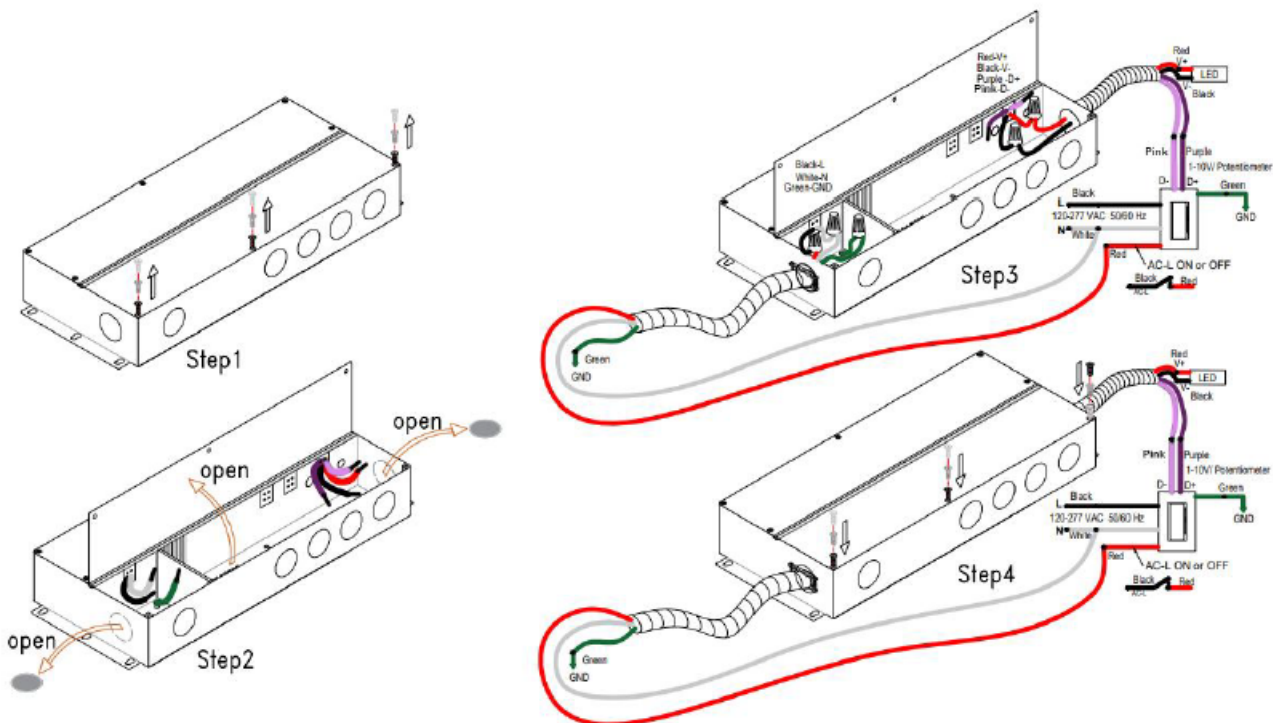
Client  Date  Qty   
Project  Type  PO#

# LS-PSU-24V-200W-5IN1

Using 0-10V/1-10V dimming (Power supply trough dimmer switch):



Using 0-10V/1-10V dimming (Power supply trough dimmer switch):

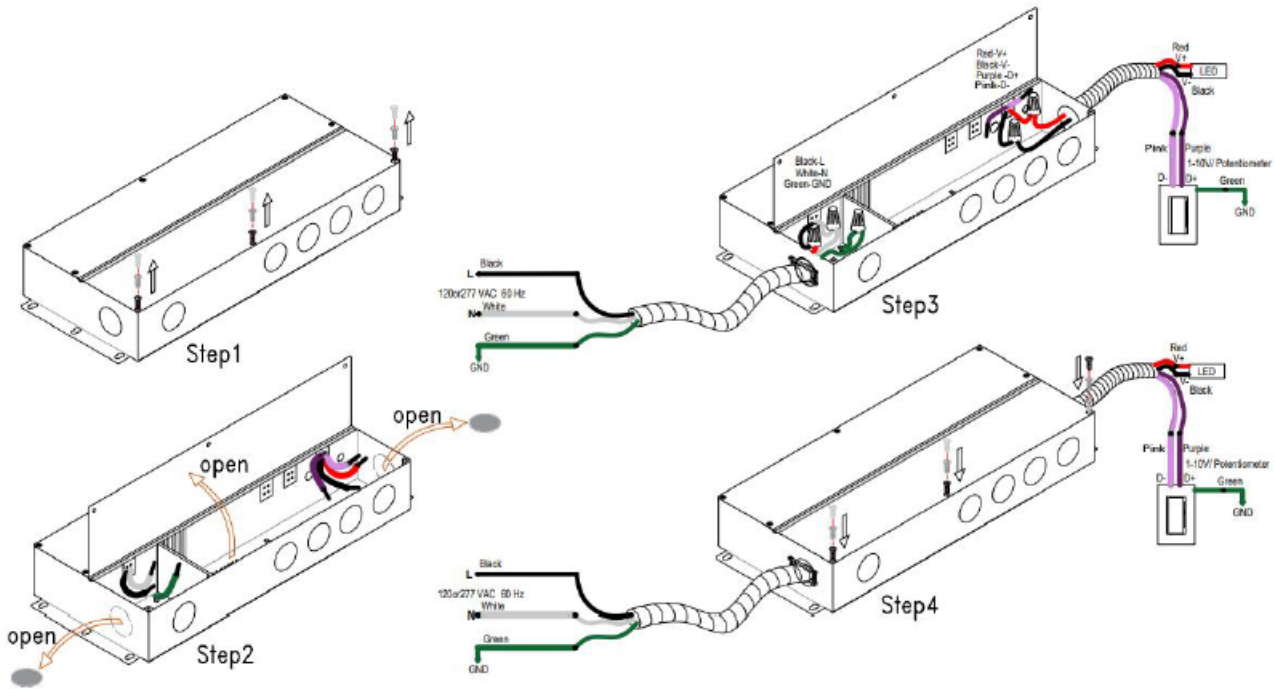




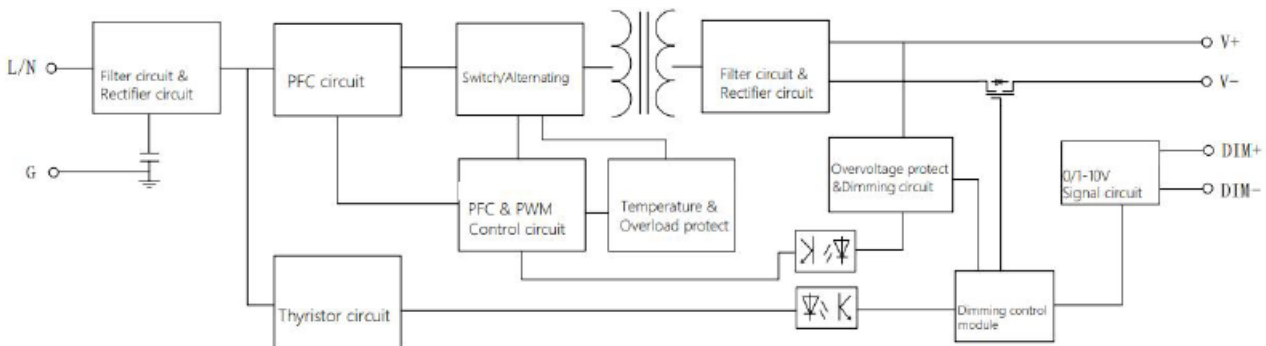
Client  Date  Qty   
 Project  Type  PO#

# LS-PSU-24V-200W-5IN1

Using 0-10V/1-10V dimming (The dimmer is not connected to high voltage):



## The topology

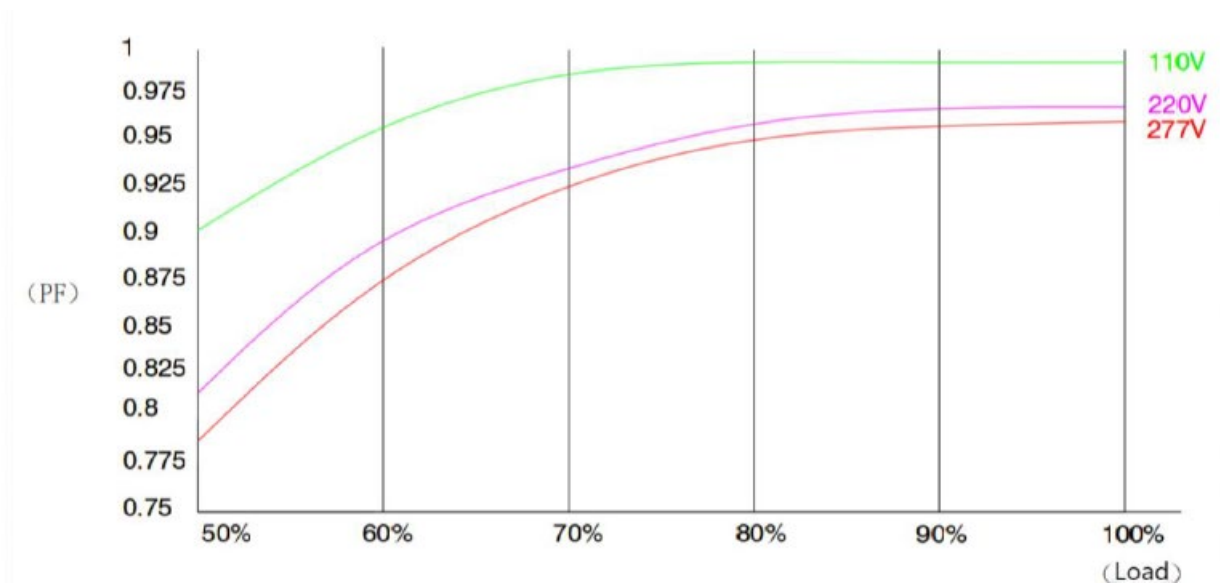




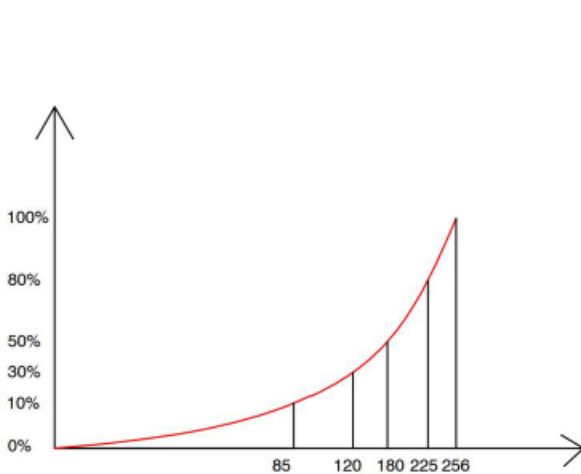
Client  Date  Qty   
Project  Type  PO#

# LS-PSU-24V-200W-5IN1

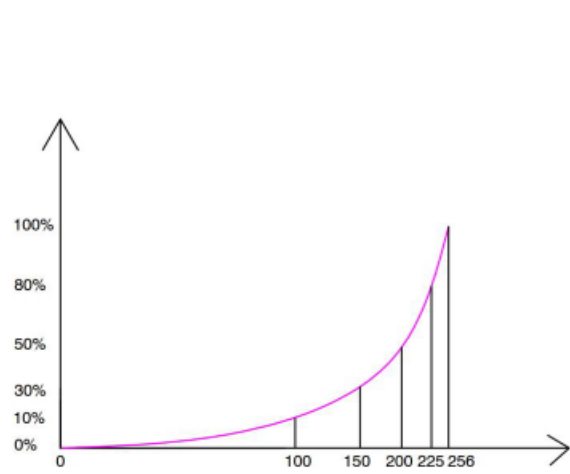
## PFC load graph



## PWM dimming curve



## VR dimming curve

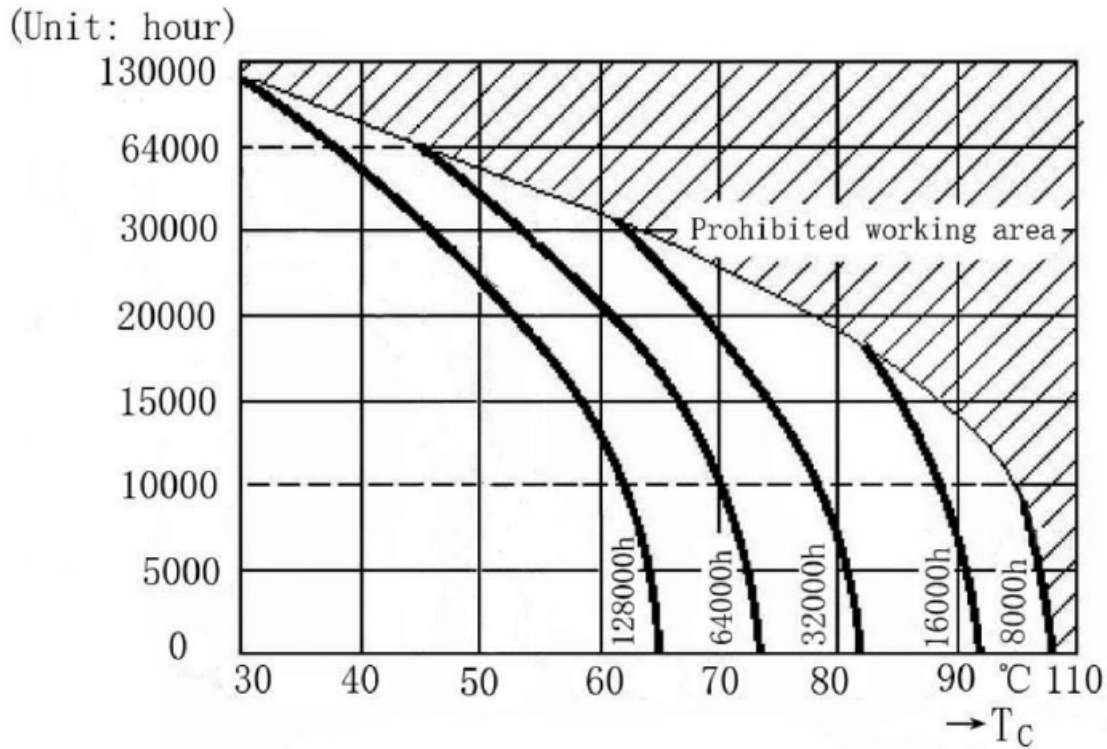




Client  Date  Qty   
Project  Type  PO#

## LS-PSU-24V-200W-5IN1

### Power supply operating temperature and life curve



### Instruction:

- 1) This driver should be installed by qualified and professional person.
- 2) Please make sure the driver is installed with adequate ventilation around it to allow for heat dissipation.
- 3) Ensure that wiring is correct before test in order to avoid light and power supply damage.